

1	2	3	4	5	6	7	8
---	---	---	---	---	---	---	---

A

Λ

—

—

B

B

—

—

C

C

MAIN LVAC SINGLE LINE DIAGRAM

—

—

D

D

—

—

E

E

—


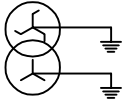

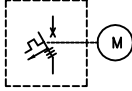


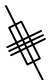






—

Γ

Γ

www.rozbin.ir

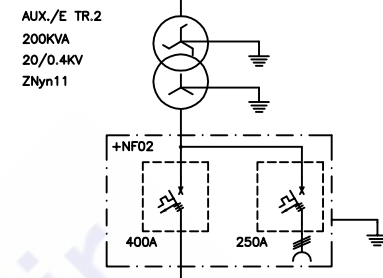
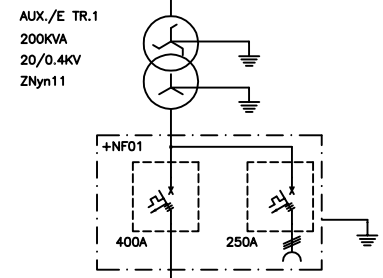
A
—
B
—
C
—
D
—
E
—
F

ITEM	DESCRIPTION
	SOCKET
	AUX./EARTH TRANS
	UNDER VOLTAGE RELAY
	MCCB
	MCB (MOTORIZED)
	MCB(SINGLE PHASE)
	FUSE
	VOLTMETER
	VOLTMETER SELECTOR SWITCH
	AMMETER
	ACTIVE ENERGY METER
	LAMP
	CT

Λ
—
B
—
C
—
D
—
E
—
Γ

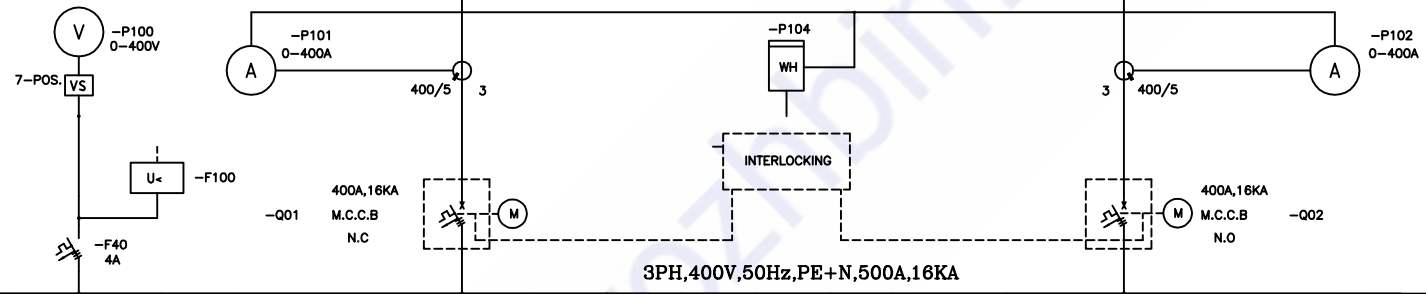
A

NOTE1:
 M : MCBs SUITABLE FOR MOTOR
 ALL MCBs WILL HAVE AUX. CONTACT
 NOTE2:
 MCB SHOULD BE INCLUDED:
 -INVERSE TIME PROTECTION -CURRENT CHARACTERISTICS FOR OVERLOAD
 -INSTANTANEOUS TRIPPING ON SHORT CIRCUIT



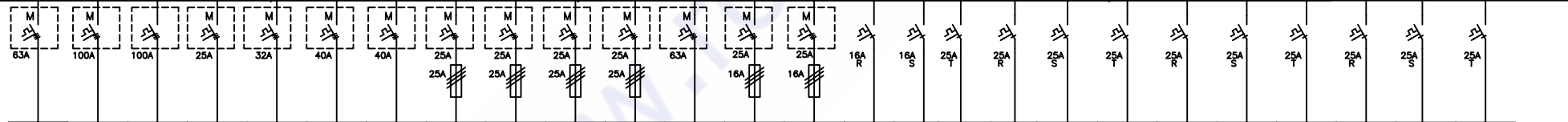
B

+NF1



C

D



1	2	4	5	6	7	8	9	10	11	12	13	14	15	16	17	18	19	20	21	22	23	24	25	26	27
CONTROL BUILDING DISTRIBUTION PANEL BOARD	OUTDOOR LIGHTING DISTRIBUTION PANEL	AIR CONDITION	48 VDC BATTERY CHARGER AC SUPPLY	SPARE	110 VDC BATTERY CHARGER-1 AC SUPPLY	110 VDC BATTERY CHARGER-2 AC SUPPLY	63/20 KV TRANSFORMER No.1	63/20 KV TRANSFORMER No.2	O.L.T.C. -1	O.L.T.C. -2	OUTLET SOCKET FOR MARSHALLING	SPARE	SPARE	OUTLET SOCKET FOR MARSHALLING OHL-1/TRANS-1	OUTLET SOCKET FOR MARSHALLING OHL-2/TRANS-2	AC HORN	PANELS ACCESSORIES	63KV O.H.L.-1 BAY HEATING AND LIGHTING	63KV O.H.L.-2 BAY HEATING AND LIGHTING	63/20KV TRANS.-1 BAY HEATING AND LIGHTING	63/20KV TRANS.-2 BAY HEATING AND LIGHTING	20KV CUBICLE ACCESSORIES (BUS 1)	20KV CUBICLE ACCESSORIES (BUS 2)	SPARE	SPARE

E

A

B

C

D

E